

## MVS SERIES FILTER SYSTEMS



### Operating Parameters

- Inlet Pressure: 30-100 psi
- Electrical: 120 VAC, 60Hz
- Temperature: 35-110 °F\*

### Materials of Construction

- Resin Tanks: Corrosion resistant fibreglass reinforced polyethylene NSF 61 Certified
- Control Valves: Plastic PPO (Noryl)
- Internal Distributors: Sch 80 PVC/ABS
- Exterior Piping: Sch 80 PVC

### Standard Features

- Electronic system controller
- Time initiated back wash
- Water or air activated diaphragm style control valves

### Options

- Single, Duplex, Triplex, Quad
- Alternate Medias: Birm, Greensand, Carbon, Chem-free, NextSand, Multi-media

\*For temperatures above 90 °F contact your local representative.

Canature WaterGroup™ has dedicated professional engineers with decades of commercial water treatment experience. Over the years, they have built a reputation for designing efficient, high quality commercial water treatment systems. Our MVS (Multiple Valve System) Series filters provide Commercial / Industrial high quality filtered water with systems starting from 30" up to 63" diameter pressure vessels. The systems are engineered and thoroughly tested to provide years of reliable, trouble free performance with minimal maintenance.

### For Applications Such As:

Apartments ● Boiler Treatment ● Cooling Towers ● Motels ● Schools ● Nursing Homes  
Car Wash ● Dairies ● Factories ● Laundromats ● Office Buildings ● Resorts  
Restaurants ● Ro Pre-Treatment ● Hospitals

Multi Media Filters																	
DMM Series Single Model	Typical		RO	Max Flow To Drain	PIPE SIZE			Media			Mineral Tank			Installation		Shipping Weight	Operating Weight
	Service Flow Rate		Flow To Drain		Service	Drain	Media	Diameter	Height	Height	Depth	Width	Lbs	Lbs			
	USPGM (L/S)	USPGM (L/S)	USPGM (L/S)	In (mm)	In (mm)	CF (M3)	In (mm)	In (mm)	In (mm)	In (mm)	In (mm)	Lbs (Kg)	Lbs (Kg)				
DMM 30-2"	48.0	39.0	60.0	2"	2"	12.5	30	72	104	45	36	1,800	3,400				
	3.0	2.5	3.8	50	50	0.35	762	1,829	2,642	1,143	914	817	1,543				
DMM 36-2"	69.0	57.0	85.0	2"	2"	17.6	36	72	105	51	42	2,500	4,500				
	4.3	3.6	5.4	50	50	0.50	914	1,829	2,667	1,295	1,067	1,134	2,042				
DMM 42-3"	96.0	77.0	120.0	3"	3"	24.0	42	72	113	65	48	3,400	6,800				
	6.0	4.9	7.6	75	75	0.68	1,067	1,829	2,870	1,651	1,219	1,543	3,085				
DMM 48-3"	126.0	100.0	160.0	3"	3"	31.0	48	72	115	71	54	4,300	8,600				
	7.9	6.3	10.1	75	75	0.88	1,219	1,829	2,921	1,803	1,372	1,951	3,902				
DMM 63-4"	216.0	173.0	270.0	3"	4"	54.0	63	86	118	86	69	7,900	15,100				
	13.6	10.9	17.0	75	100	1.53	1,600	2,184	2,997	2,184	1,753	3,584	6,851				

Service based on 10 usgpm/ft<sup>2</sup> RO based on 8 usgpm/ft<sup>2</sup>

Next Sand Filters																		
DNX Series Single Model	Typical		Peak	RO	Max Flow To Drain	PIPE SIZE			Media			Mineral Tank			Installation		Shipping Weight	Operating Weight
	Max. Recommended Flow Rates		Flow To Drain	Service		Drain	Media	Diameter	Height	Height	Depth	Width	Lbs	Lbs				
	USPGM (L/S)	USPGM (L/S)	USPGM (L/S)	In (mm)	In (mm)	CF (M3)	In (mm)	In (mm)	In (mm)	In (mm)	In (mm)	Lbs (Kg)	Lbs (Kg)					
DNX 30-2"	48.0	73	39.0	60.0	2"	2"	12.5	30	72	104	45	36	1,600	3,200				
	3.0	4.6	2.5	3.8	50	50	0.35	762	1,829	2,642	1,143	914	726	1,452				
DNX 36-3"	69.0	105	57.0	85.0	3"	3"	17.6	36	72	105	51	42	2,100	4,100				
	4.3	6.6	3.6	5.4	75	75	0.50	914	1,829	2,667	1,295	1,067	953	1,860				
DNX 42-3"	96.0	144	77.0	120.0	3"	3"	24.0	42	72	113	65	48	2,800	6,200				
	6.0	9.1	4.9	7.6	75	75	0.68	1,067	1,829	2,870	1,651	1,219	1,270	2,813				
DNX 48-4"	126.0	188	100.0	160.0	4"	4"	31.0	48	72	115	71	54	3,578	7,878				
	7.9	11.8	6.3	10.1	100	100	0.88	1,219	1,829	2,921	1,803	1,372	1,623	3,574				

Typical service based on 10 usgpm/ft<sup>2</sup> Peak based on 15 usgpm/ft<sup>2</sup> Flowrates may change depending upon actual feed water quality water conditions

Backwash flowrates based on cold water. If regeneration feed water is above 45 °F, The backwash flow rate will have to be increased.

Carbon Filters																	
DAC Series Single Model	Typical		RO Pre-treat	Max Flow To Drain	PIPE SIZE			Media			Mineral Tank			Installation		Shipping Weight	Operating Weight
	Service Flow Rate		Flow To Drain		Service	Drain	Media	Diameter	Height	Height	Depth	Width	Lbs	Lbs			
	USPGM (L/S)	USPGM (L/S)	USPGM (L/S)	In (mm)	In (mm)	CF (M3)	In (mm)	In (mm)	In (mm)	In (mm)	In (mm)	Lbs (Kg)	Lbs (Kg)				
DAC 30-2"	29.0	12.0	50.0	2"	2"	12.5	30	72	104	45	36	1,200	2,800				
	1.8	0.8	3.2	50	50	0.35	762	1,829	2,642	1,143	914	544	1,270				
DAC 36-2"	42.0	18.0	70.0	2"	2"	17.6	36	72	105	51	42	1,600	3,600				
	2.6	1.1	4.4	50	50	0.50	914	1,829	2,667	1,295	1,067	726	1,633				
DAC 42-3"	58.0	28.0	95.0	3"	3"	24.0	42	72	113	65	48	2,100	5,500				
	3.7	1.8	6.0	75	75	0.68	1,067	1,829	2,870	1,651	1,219	953	2,495				
DAC 48-3"	75.0	37.0	125.0	3"	3"	31.0	48	72	115	71	54	2,700	7,000				
	4.7	2.3	7.9	75	75	0.88	1,219	1,829	2,921	1,803	1,372	1,225	3,176				
DAC 63-4"	130.0	64.0	215.0	3"	4"	54.0	63	86	118	86	69	5,000	12,200				
	8.2	4.0	13.5	75	100	1.53	1,600	2,184	2,997	2,184	1,753	2,269	5,535				

Typical service based on 6 usgpm/ft<sup>2</sup>, RO pretreat based on 2.5 usgpm/ft<sup>2</sup>

Manganese Greensand Filters																		
DMG Series Single Model	0-3 PPM		3-8 PPM		Max Flow To Drain	PIPE SIZE			Media			Mineral Tank			Installation		Shipping Weight	Operating Weight
	Max Service Flow Rate		Flow To Drain	Service		Drain	Media	Diameter	Height	Height	Depth	Width	Lbs	Lbs				
	USPGM (L/S)	USPGM (L/S)	USPGM (L/S)	In (mm)	In (mm)	CF (M3)	In (mm)	In (mm)	In (mm)	In (mm)	In (mm)	Lbs (Kg)	Lbs (Kg)					
DMG 30-2"	25.0	15.0	10.0	50.0	2"	2"	12.5	30	72	104	45	36	2,000	3,600				
	1.6	0.9	0.6	3.2	50	50	0.35	762	1,829	2,642	1,143	914	907	1,633				
DMG 36-2"	35.0	21.0	14.0	70.0	2"	2"	17.6	36	72	105	51	42	2,600	4,600				
	2.2	1.3	0.9	4.4	50	50	0.50	914	1,829	2,667	1,295	1,067	1,180	2,087				
DMG 42-3"	48.0	29.0	19.0	95.0	3"	3"	24.0	42	72	113	65	48	3,400	6,800				
	3.0	1.8	1.2	6.0	75	75	0.68	1,067	1,829	2,870	1,651	1,219	1,543	3,085				
DMG 48-3"	63.0	38.0	25.0	125.0	3"	3"	31.0	48	72	115	71	54	4,400	8,700				
	4.0	2.4	1.6	7.9	75	75	0.88	1,219	1,829	2,921	1,803	1,372	1,996	3,947				
DMG 63-4"	108.0	65.0	42.0	215.0	3"	4"	54.0	63	86	118	86	69	7,900	15,100				
	6.8	4.1	2.6	13.5	75	100	1.53	1,600	2,184	2,997	2,184	1,753	2,269	5,535				

System has basic chemical pump for continuous feed. For varying flowrates flow pace chemical feed is required (optional)

Birm Filters																
DBF Series Single Model	Max Service		Max Flow To Drain	PIPE SIZE			Media			Mineral Tank			Installation		Shipping Weight	Operating Weight
	Flow Rate			Service	Drain	Media	Diameter	Height	Height	Depth	Width	Lbs	Lbs			
	USPGM (L/S)	USPGM (L/S)	In (mm)	In (mm)	CF (M3)	In (mm)	In (mm)	In (mm)	In (mm)	In (mm)	Lbs (Kg)	Lbs (Kg)				
DBF 30-2"	25	50	2"	2"	12.5	30	72	104	45	36	1,400	3,000				
	1.6	3.2	50	50	0.35	762	1,829	2,642	1,143	914	635	1,361				
DBF 36-2"	35	70	2"	2"	17.6	36	72	105	51	42	1,900	3,900				
	2.2	4.4	50	50	0.50	914	1,829	2,667	1,295	1,067	862	1,770				
DBF 42-3"	48	95	3"	3"	24.0	42	72	113	65	48	2,500	5,900				
	3.0	6.0	75	75	0.68	1,067	1,829	2,870	1,651	1,219	1,134	2,677				
DBF 48-3"	63	125	3"	3"	31.0	48	72	115	71	54	3,100	7,400				
	4.0	7.9	75	75	0.88	1,219	1,829	2,921	1,803	1,372	1,407	3,358				
DBF 63-4"	108	215	3"	4"	54.0	63	86	118	86	69	5,800	13,000				
	6.8	13.5	75	100	1.53	1,600	2,184	2,997	2,184	1,753	2,632	5,898				

Service flow rate based on 5 usgpm/ft<sup>2</sup> Hydrocharger (air induction) system if required sold separately.

Chem Free Filters																	
DCF Series Single Model	Service		Peak	Max Flow To Drain	PIPE SIZE			Media			Mineral Tank			Installation		Shipping Weight	Operating Weight
	Flow Rate		Flow To Drain		Service	Drain	Media	Diameter	Height	Height	Depth	Width	Lbs	Lbs			
	USPGM (L/S)	USPGM (L/S)	USPGM (L/S)	In (mm)	In (mm)	CF (M3)	In (mm)	In (mm)	In (mm)	In (mm)	In (mm)	Lbs (Kg)	Lbs (Kg)				
DCF 30-2"	15	25	50	2"	2"	12.5	30	72	104	45	36	2,000	3,600				
	0.9	1.6	3.2	50	50	0.35	762	1,829	2,642	1,143	914	907	1,633				
DCF 36-2"	21	35	70	2"	2"	17.6	36	72	105	51	42	2,600	4,600				
	1.3	2.2	4.4	50	50	0.50	914	1,829	2,667	1,295	1,067	1,180	2,087				
DCF 42-3"	29	48	95	3"	3"	24.0	42	72	113	65	48	3,700	7,100				
	1.8	3.0	6.0	75	75	0.68	1,067	1,829	2,870	1,651	1,219	1,679	3,221				
DCF 48-3"	38	63	125	3"	3"	31.0	48	72	115	71	54	4,700	9,000				
	2.4	4.0	7.9	75	75	0.88	1,219	1,829	2,921	1,803	1,372	2,132	4,083				
DCF 63-4"	65	108	215	3"	4"	54.0	63	86	118	86	69	8,400	15,600				
	4.1	6.8	13.5	75	100	1.53	1,600	2,184	2,997	2,184	1,753	3,811	7,078				

Service based on 3 usgpm/ft<sup>2</sup>, Peak based on 5 usgpm/ft<sup>2</sup>. System must be designed to draw air continuously.

### DMM FILTER (MULTI-MEDIA)

For removal of sediment, dirt and other forms of suspended matter. Provides particle filtration down to 10 micron. Media has excellent chemical properties—high silica content and low soluble calcium, magnesium and iron compounds.

### DAC FILTER (ACTIVATED CARBON)

For the reduction of tastes, odors and dissolved organic chemicals from municipal and industrial water supplies. The media has exceptionally high internal surface area with optimum pore size for the adsorption of a broad range of low molecular weight organic contaminants and oxidizing agents like chlorine and ozone.

### DBF FILTER (BIRM)

For the reduction of dissolved iron and manganese compounds. The Birm media is not consumed in the iron removal operation resulting in a low attrition loss. It has a wide temperature performance range and extremely high removal efficiency. The media does not require chemicals for regeneration and only periodic backwash is required.

### DNX FILTER (NEXTSAND)

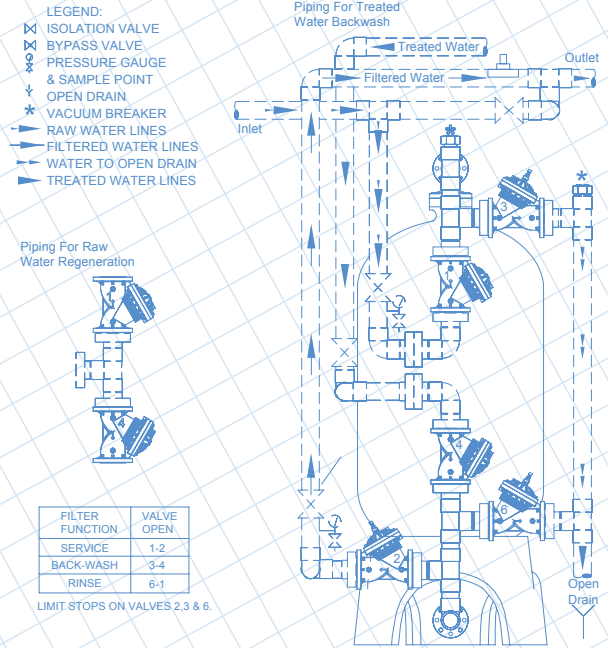
High capacity filtration for removal of sediment, dirt and other forms of suspended matter. Provides particle filtration down to 3 micron with 3-4 times increased service flow rate per square foot bed area over traditional sand media filters. Provides high flow rates, lower pressure drop and superior filtration performance

### DMG FILTER (GREENSAND)

For the oxidation and removal of iron, manganese, and hydrogen sulfide. Provides filtration level to 30 micron. Requires a potassium permanganate, chlorine, or other strong oxidant injection assembly to assist oxidative capacity of the filter media

### DCF CHEMFREE FILTER

For the reduction of dissolved and precipitated iron. No chemicals are added to the water supply or the filter. The system uses air as the oxidant drawn in by the hydrocharger bank (sold separately). The system must be designed to draw air continuously.



Toll Free: 877-288-9888  
www.canaturewg-cied.com



Regina, SK • Cambridge, ON • Carmel, IN • Fridley, MN  
Phoenix, AZ • Pottstown, PA